

Electricity is a good value!



You can wash a load of dishes for 16 cents.

Or save 16 cents and do it by hand.



mark **YOUR** calendar

- May 30** Offices Closed - Memorial Day
- June 7** Kenergy Annual Meeting in Henderson
- Sept. 16** Member Appreciation Day

Luscious Four-layer Pumpkin Cake

Submitted by Dorris Knott, Morganfield

- 1 pkg yellow cake mix
- 1 can (12 oz) pumpkin – divided
- ½ c. milk
- 1/3 c. vegetable oil
- 4 large eggs
- 1 ½ tsp. pumpkin pie spice – divided
- 1 8-oz. pkg cream cheese (soft)
- 1 c. powdered sugar
- 1 8-oz. tub Cool Whip
- ¼ c. caramel topping
- ½ cup pecans

Preheat oven to 350 degrees. Grease and flour two round cake pans. Beat cake mix, 1 cup pumpkin, milk, oil, eggs and 1 tsp. of pumpkin spice in a large bowl with a mixer on medium speed until the mixture is well blended.

Pour this mixture evenly into the prepared pans. Bake it 20 to 23 minutes or until a toothpick inserted comes out clean. Cool completely.

Meanwhile, beat cream cheese in a small bowl on medium until the cream cheese reaches a creamy consistency. Add the powdered sugar, remaining pumpkin and spice. Mix well. Stir in the whipped topping.

Remove the cake from pans. Cut them in half with a serrated knife. Spread the cream-cheese mixture between the layers. Drizzle the caramel topping and pecans on top. Store in refrigerator.



Dorris Knott

2011 Kenergy Corp. Member of the Year

In an effort to recognize the many good deeds of our member-owners, Kenergy Corp. has started a new program titled Member of the Year. The charity for which the winner volunteers receives \$1,000 in honor of our member's community service.

If you know of a Kenergy member who is a selfless volunteer, please take the time to fill out a nomination form on their behalf.

The guidelines are:

- Only Kenergy Corp. members are eligible for Member of the Year.
- The nominee's volunteer activities must be performed within Kenergy's 14-county service area.
- Kenergy members are welcome to nominate themselves for this award. Don't be shy. This could be your chance to earn a \$1,000 donation for your favorite civic organization.
- Nominations must be received by 4:30 p.m. on October 3, 2011. Nomination forms are available in Kenergy offices, at co-op events and on the co-op's Web site at www.kenergycorp.com. Completed forms should be mailed to Member Services Department, Kenergy Corp., PO Box 18, Henderson, KY 42419-0018. Forms may be delivered to any of our offices or faxed to (270) 685-2279 to the attention of Renee Beasley Jones.
- Eligible members will volunteer their time to nonprofit, civic organizations only, excluding churches or religion-based groups.
- Elected officials, Kenergy employees and members of the co-op's Board of Directors are excluded from participation.

A panel made up of five Kenergy Member Resource Committee members will select the winner.

The winner will be announced at the Dec. 1, 2011 Member Resource Committee meeting. The winner and a representative from his or her favorite charity will be expected to attend the event.

Official Notice of Annual Membership Meeting

The Annual Meeting of the Members of Kenergy will be held at the Henderson County High School located at 2424 Zion Road, Henderson, KY, at 6:30 p.m. CDT on Tuesday, June 7, 2011, to consider and take action with respect to the following:

1. Reports of officers, directors, and committees
2. Such other business as may properly come before the meeting or adjournment thereof.

Sandra Wood
Secretary-Treasurer

Christopher Mitchell
Chairman



Co-op Connections cards put value in your wallet

Kenergy Corp.'s commitment to you goes beyond providing safe, reliable and affordable electricity.

We're always looking for ways to provide value to our members and our community, especially during tough economic times. Kenergy's Co-op Connections card is a money-saving tool we're proud to offer our membership.

The card connects you with discounts on everything from hotel stays to prescription drugs.

Beginning on May 1, you can come into any Kenergy office and request your Co-op Connections card packet, which provides one card for your wallet and two others for key chains. Every member of your family does not

need a card. Just divide the card packet among family members.

Also, Kenergy will make these cards available to member-owners at our June 7 Annual Meeting at Henderson County High School.

A wide variety of pharmacies throughout our community accept this new card, including Kroger, Walmart, CVS, Target, Walgreens and more. Be sure to present the card at the register to receive your discount!

We hope local businesses participating in the Co-op Connections program benefit from increased traffic from Kenergy members. Businesses can sign up for the program at no cost. For a complete list of participating businesses simply log on

Continued on page 3... CONNECTION CARDS



Sandy Novick
President/CEO

Kenergy plans Annual Meeting

Mark calendars for June 7 at Henderson County High School

HENDERSON, Ky. — Kenergy's Annual Meeting will take place Tuesday, June 7, at Henderson County High School. Registration begins at 3 p.m.

At the meeting, members will receive free plastic pails and compact fluorescent light bulbs. Popcorn and a light supper will be served. Cash and door prizes will be given. Members must be present to win.

The co-op will give out its new Co-op Connections card, which provides savings on prescription drugs, hotel stays and more. (See related article on this page.)

Prior to the co-op's annual business meeting, which starts at 6:30 p.m., members can browse through an Energy Expo, where they can learn about energy-efficient windows, building techniques and appliances from a variety of businesses. Vendors will give out cash prizes regularly before the business meeting begins.

In addition, Methodist Hospital will provide health-care information, including blood-pressure checks and brief demonstrations on self examinations for cancer. Henderson Dermatology will give out 30 SPF lip balm and provide information on skin cancer and tanning beds.

At the Annual Meeting, 24 college students will win \$500 scholarships. Students and at least one parent must attend to be eligible.

Kenergy's scholarships are drawn in a lottery format. Students must register before 6:30 p.m. Scholarships are drawn after the business meeting.

To qualify, the student must be a Kenergy member-owner or must have his/her primary residence with a parent or legal guardian who presently receives electric service from Kenergy.

Continued on page 3... ANNUAL MEETING

Stefan Sztapka of Morganfield is a walking encyclopedia of plants



Story inside...

HVAC Rebate Pilot Program

Between May 1 and June 30, Kenergy Corp. and Big Rivers Electric Corp. will offer rebates to homeowners and businesses that have their heating and cooling systems professionally cleaned and serviced. Well-maintained heating, cooling and refrigeration units operate more efficiently and use less energy.

Homeowners will receive a \$25 gift card for each unit that is cleaned and serviced, up to a maximum of \$100 per member. The residential program will continue until 280 residential units have been serviced or June 30, whichever comes first.

Commercial members will receive \$50 for each unit that is cleaned and serviced, up to a maximum of \$250 per member. Businesses that maintain large refrigeration units qualify for this rebate as well.

The commercial program will continue until 160 units have been serviced or June 30, whichever comes first.

To qualify, service invoices must be dated between May 1 and June 30. In addition, invoices for service must be submitted to Kenergy no later than July 29, 2011.

For more information about this rebate program, contact Scott Heath at (270) 689-6156 or (800) 844-4832, extension 6156.

MADE IN THE SHADE

From dwarf redwoods to decorative crabapples, Stefan Sztapka of Morganfield is a walking encyclopedia of plants

MORGANFIELD, Ky. — After the January 2009 ice storm, Stefan Sztapka drove around for hours, observing how the disaster affected trees.

Most were not pruned properly, Stefan says, resulting in an unnecessary loss of limbs. In addition, residents didn't plant the best species for the area, which contributed greatly to the demise of trees.

For example, Bradford and other ornamental pear trees are popular here. Yet, they didn't stand up well to the ice storm or the remnants of Hurricane Ike that roared through the region in September 2008.

Standing in the middle of his living room, Stefan sticks out his arms, pretending to be a Bradford pear. Due to the way the limbs grow from the trunks, he explains as he points to his left shoulder, this species is more susceptible to damage during an ice storm or windstorm.

While he's explaining the Bradford pear's design flaw, he tells the tree's history, which involves the late Lady Bird Johnson. If residents here want a lovely ornamental tree, Stefan suggests they snub Bradford pears and consider crabapples.

Residents who don't want to deal with crabapple fruit on the ground should take heart. Crabapples come in about 600 varieties. The majority of those don't lose their fruit, which is a colorful



Stefan Sztapka (pronounced Step-ka) swears his love of plants comes from deep down — in his DNA.

addition to any landscape. Stefan's two top choices are Louisa and Coral Burst crabapples.

Documentation shows some bristlecone pines live up to thousands of years, and Dawn Redwoods can live 600. Both tolerate Kentucky weather well.

Ball Cypress holds up to storms and heals quickly. Oak Leaf Hydrangeas are fragrant and, for added interest, their bark peels.

And Stefan continues. He can talk as long as anyone can listen about trees and other plants.

How does Stefan know so much about horticulture?

To begin, his dad was a horticulturalist. "It's in my blood," Stefan says. "It's the feeling I have when I'm around plants."

He and his wife, Carolyn, once owned Nettle Creek Nursery near Chicago. They opened the business in 1975 and operated it nearly 30 years. Before moving to Kentucky, they sold it to one of their children, who continues to run the business.

Stefan is eager to show photographs of the nursery. Instead of a 10-acre business, Nettle Creek looks like a well-groomed botanical garden, complete with whimsi-

cal sculptures and rock walls. Some customers would come and stay most of the day, he says.

Nettle Creek Nursery boasts of offering one of the Midwest's largest varieties of plants, Stefan says. For example, it has 10



types of redbuds and more than 40 species of crabapples.

Carolyn and Stefan left the Chicago area for rural Morganfield because Carolyn grew up in Waverly. They decided to return to her roots.

Their 10-acre plot is a living palette, and they are the artists. Stefan walks around all day with a pair of pruning shears and other small hand tools in his pocket.

Their hobby farm is an experimental lab — and a home for castaway trees. For example, a nearby nursery planned to toss three Dawn Redwoods, which can live hundreds of years. Stefan snapped them up and planted them.

Stefan doesn't understand how anyone can throw out or destroy living plants. "How can I cut something that God made?" he asks. "Working with plants, I'm closer to God than when I am in church."

Stefan Sztapka's top picks for this region:

Dwarf redwoods live up to 600 years and do well in this region. The Paper Bark Maple is another tree he really likes. It grows to about 15 feet tall and has a lovely cinnamon bark that peels slightly.

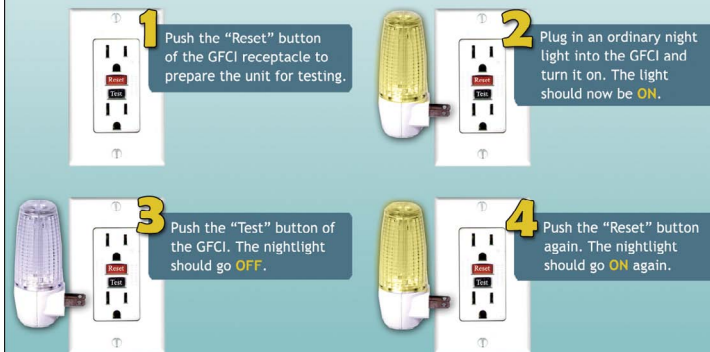
The Tri-Colored Beech is unique because each leaf has three colors that look like flowers on the tree.

When it comes to large trees, Stefan likes Sugar Maples and Willow Oaks.

How to test electrical outlets

Since the 1970s ground fault circuit interrupters (GFCIs) have saved thousands of lives, helping cut the number of home electrocutions in half. The safety devices prevent deadly shock by quickly shutting off power to the circuit if the electricity flowing into the circuit differs from the amount returning. The safety devices should be used in any indoor or outdoor area where water may come into contact with electrical products.

GFCIs should be tested once a month to make sure they're working properly. To test a device, follow these four steps:



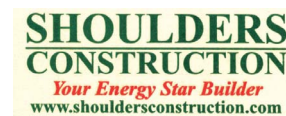
Source: Electrical Safety Foundation International

ANNUAL MEETING and Energy Expo

Kenergy has partnered with these vendors to provide this free event to Kenergy members.

- June 7 at Henderson County High School
- A free meal will be served from 3-6:30 p.m.
- Twenty-four college scholarships of \$500 each will be drawn.
- Energy Expo
- Health Fair

For more information, go online to www.kenergycorp.com or call (800) 844-4832, ext. 6103.



CONNECTION CARDS... continued from page 1

to our website www.kenergycorp.com and follow the Co-op Connections Card link.

The card also gives you access to online savings at more than



95 national retailers such as Barnes&Noble.com, Hertz Rental Cars, Best Western hotels and ProFlowers.com. You can check out these great national discounts at www.connections.coop.

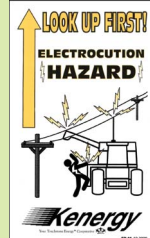
One of the most valuable features of the Co-op Connections Card is the pharmacy discount. While it is not insurance, the discount can mean savings of 10 to 60 percent on prescription drugs. The logo and information on the back of your card is recognized at more than 60,000 national, regional, and local pharmacies.

The pharmacy discount has been widely used by members of Touchstone Energy co-ops across the country, resulting in combined savings of nearly \$20 million on prescriptions.

Want to find out more? Log on to www.locateproviders.com to search for pharmacies in our area honoring the card. Use code 22203KY23 as the group number under the "Groups" login section. Next, enter your zip code.

As a Touchstone Energy co-op, Kenergy strives to serve its members according to four core values: safety, service, people and performance. Our Co-op Connections card is one of the ways we live up to those values.

We're eager to answer any questions you have about the card and how to take advantage of the discounts it provides. Call us at 800-844-4832 to find out more, or log on to www.kenergycorp.com.



Kenergy has "look up" stickers for farmers to post in the windshields of their tractors and combines.

Stop by your Kenergy office to pick up one today.

ANNUAL MEETING... continued from page 1

Students must be enrolled full time, which is at least 12 semester hours.

At the Annual Meeting, the parent or guardian must first register for the membership meeting between 3 p.m. and 6:30 p.m. and then accompany the student to the scholarship registration booth to register for the drawing.

Scholarships may be used to pay tuition, buy computers, housing, lab fees or other expenses pertaining to an education. Students of all ages are eligible, including those seeking masters or doctoral degrees.

Kenergy scholarships are one-time awards. If members already received a Kenergy scholarship, they are no longer eligible.

For more information about the Annual Meeting or Kenergy scholarships, call Renee Beasley Jones at (800) 844-4832 or go to www.kenergycorp.com.

