



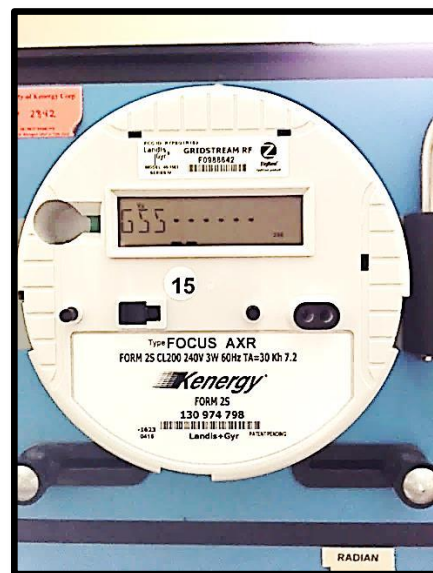
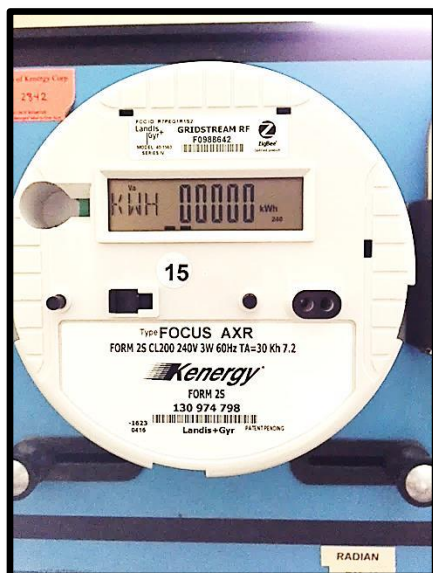
In the coming months, crews with Kenergy and Apex CoVantage, a cooperative contractor, will change your meter.

Once your new meter is installed, you will notice slight differences. For example, two screens will be displayed, as shown below, and there will be a six-second time lapse between screen changes.

To report your monthly meter reading, you will record the five digits on the left screen. Those numbers follow the letters KWH, also shown below.

Please disregard the second screen. It is simply part of the meter manufacturer's standard display settings.

Thank you for your understanding while Kenergy implements this system upgrade, which will improve the reliability of your electricity and help the cooperative control costs.



Revised 5/27/15