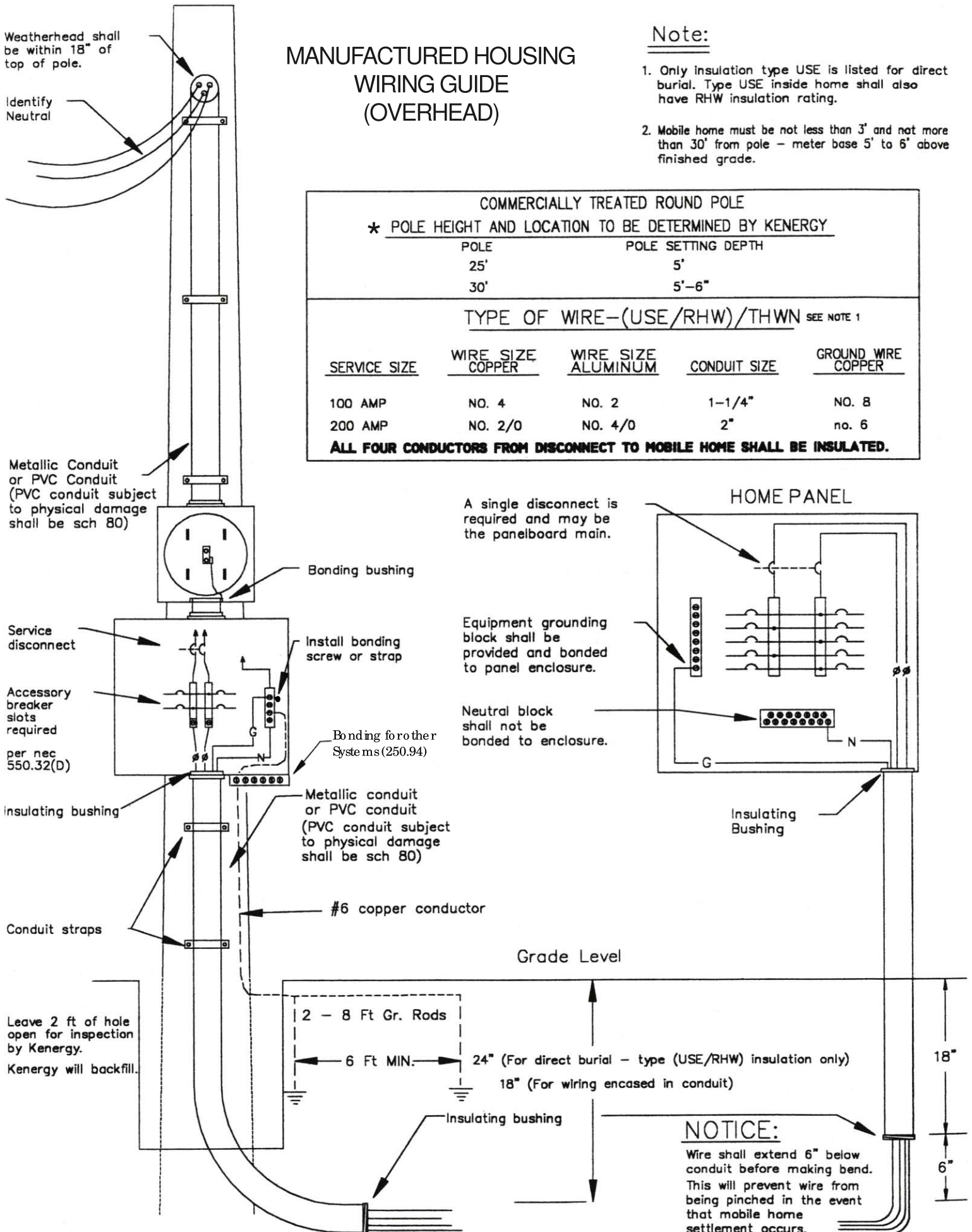


# MANUFACTURED HOUSING WIRING GUIDE (OVERHEAD)

## Note:

1. Only insulation type USE is listed for direct burial. Type USE inside home shall also have RHW insulation rating.
2. Mobile home must be not less than 3' and not more than 30' from pole - meter base 5' to 6' above finished grade.

COMMERCIALLY TREATED ROUND POLE				
* POLE HEIGHT AND LOCATION TO BE DETERMINED BY KENERGY				
POLE		POLE SETTING DEPTH		
25'		5'		
30'		5'-6"		
TYPE OF WIRE-(USE/RHW)/THWN SEE NOTE 1				
SERVICE SIZE	WIRE SIZE COPPER	WIRE SIZE ALUMINUM	CONDUIT SIZE	GROUND WIRE COPPER
100 AMP	NO. 4	NO. 2	1-1/4"	NO. 8
200 AMP	NO. 2/0	NO. 4/0	2"	no. 6
ALL FOUR CONDUCTORS FROM DISCONNECT TO MOBILE HOME SHALL BE INSULATED.				



KENERGY CORP.

EP-63 Revised 11-24-09