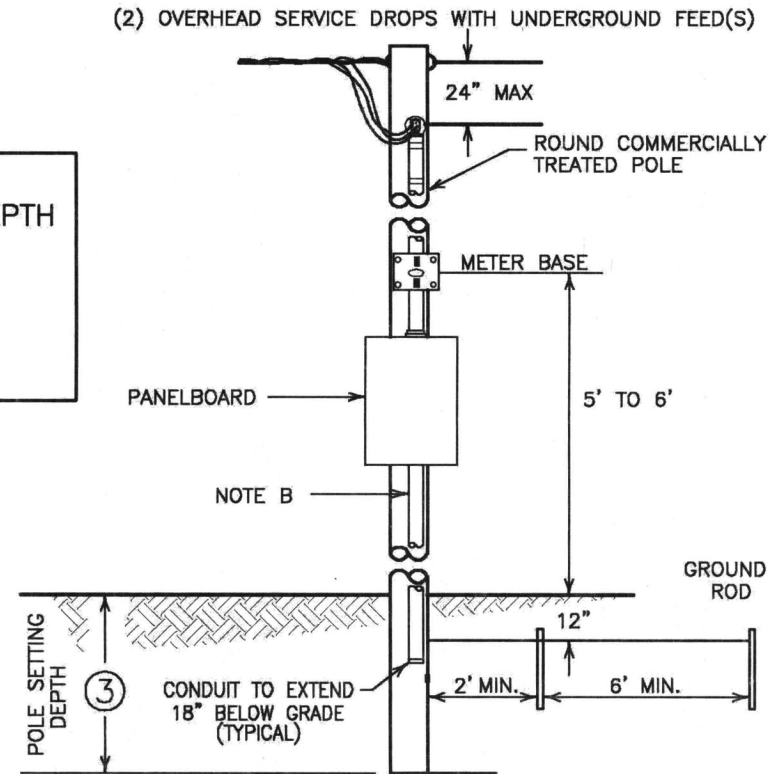
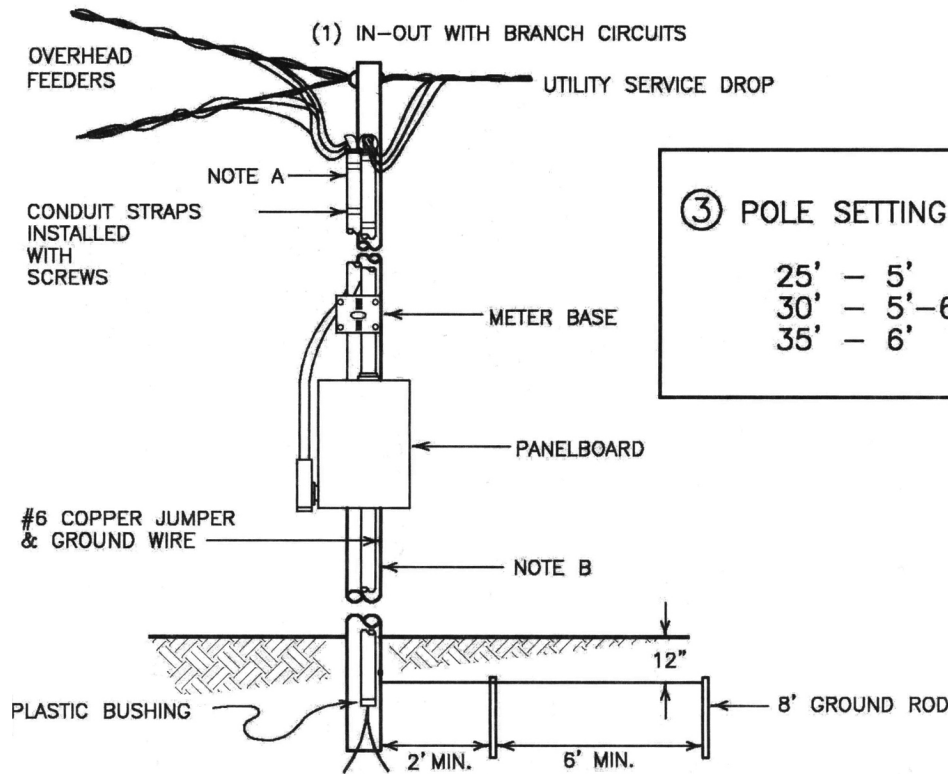


# METERING INSTALLATION (SINGLE-PHASE, 3 WIRE 120/240 AND 240/480 VOLT, POLE TYPE)

\*Kenergy Engineering Department will spot location for meter pole.



SERVICES ILLUSTRATED ABOVE EMPLOY CONVENTIONAL METER POLES WITH WEATHERPROOF BREAKER OR FUSED DISCONNECT.

DISCONNECTS ARE REQUIRED FOR EACH SERVICE. WHERE MORE THAN ONE BUILDING OR OTHER STRUCTURE IS ON THE SAME METER, EACH SHALL BE PROVIDED WITH THE MEANS FOR DISCONNECTING ALL UNGROUNDED CONDUCTORS.

ALL GROUNDING, BONDING, AND CLEARANCES SHALL COMPLY WITH THE NEC (NATIONAL ELECTRIC CODE.) THE NEUTRAL OR GROUNDED CONDUCTOR BROUGHT TO EACH SERVICE EQUIPMENT SHALL BE LARGE ENOUGH TO CARRY THE UNBALANCED CURRENT AND SHALL NOT BE SMALLER THAN SPECIFIED BY TABLE 250-94 OF THE NEC.

**NOTE A:** CONDUIT ABOVE PANELBOARD MAY BE RIGID METAL CONDUIT, INTERMEDIATE METAL CONDUIT, RIGID NONMETALLIC CONDUIT OR ELECTRICAL METALLIC TUBING (NEC 230-43).

**NOTE B:** CONDUIT EMERGING FROM GROUND SHALL BE RIGID METAL CONDUIT, INTERMEDIATE METAL OR SCHEDULE 80 RIGID NONMETALLIC CONDUIT. (NEC 300-5D)

CLEARANCES 12 FEET OVER RESIDENTIAL PROPERTY AND THOSE COMMERCIAL AREAS NOT SUBJECTED TO TRUCK TRAFFIC WHERE VOLTAGE IS LIMITED TO 300 VOLTS TO GROUND; 15 FEET WHERE SUBJECT TO NON-ROUTINE VEHICULAR TRAFFIC AND 18 FEET OVER PUBLIC STREETS, ALLEYS, ROADS, PARKING AREAS SUBJECT TO TRUCK TRAFFIC; DRIVEWAYS ON OTHER THAN RESIDENTIAL PROPERTY AND OTHER LAND TRAVERSED BY VEHICLES SUCH AS CULTIVATED, GRAZING, FOREST AND ORCHARD (NEC 230-24).