

Member  
owned.  
**Service  
driven.**

MARCH 2020

INSIDE:



Double Crust  
Chicken Pot Pie Recipe

Alamon Pole  
Inspections



# MemberMatters

**Kenergy**  
Your Touchstone Energy Cooperative

www.kenergycorp.com

## REMODELING? KEEP ENERGY EFFICIENCY IN MIND

Spring is prime season for remodeling, upgrading and repairing your home. If you're planning a remodeling project this season, make a point of adding energy-efficient features along the way.

### Here's a Top 10 list:

1. Add insulation around recessed lights so no heated or air-conditioned air can leak out of them and the outdoor weather can't sneak in.
2. If you're replacing your water heater, consider a heat pump water heater. You can also save energy by setting the temperature at 120 degrees.
3. Install programmable thermostats when you add rooms to the house. While you're at it, have the thermostats in the rest of the home upgraded to programmable models. (Please check the manufacturer's book or ask your HVAC expert as wide swings in settings for heat pumps are not recommended.)
4. Your contractor will install more insulation in any new spaces you're adding than your builder did during the original construction of your home. Consider adding insulation to already-insulated areas, like the basement or crawlspace and attic to match new energy efficiency standards.
5. A new kitchen means shiny new appliances. Select those rated as energy efficient by ENERGY STAR, which guarantees that the appliance will use less energy than unrated models.
6. If your older home still has single-pane windows, put an upgrade at the top of your remodeling wish list. Double-pane windows are more energy efficient because they shield your home from the outdoor weather—and keep your conditioned air indoors.
7. Change the light fixtures in your most-used rooms to LED models. They last 10 years or longer, save considerable energy when compared to regular lightbulbs and you never have to change bulbs.
8. Work with a contractor who understands how passive solar design can lower your energy bills. Some popular choices are rooftop solar panels that heat the home's water; sunroom additions that invite natural heat into the home through windows; and the addition of skylights.

*continued on page 3*

TIME TO TACKLE  
DIY projects?

LEARN WHERE CABLES ARE  
IN YOUR WALL TO AVOID  
DRILLING, NAILING OR  
SCREWING INTO THEM.

# SAVE THE DATE

**Kenergy  
Annual Meeting**

**Tuesday, June 9th  
Owensboro**



## OFFICE HOURS

**Henderson** 7:30 a.m. - 4:30 p.m.  
6402 Old Corydon Road

**Owensboro** 7:30 a.m. - 4:30 p.m.  
3111 Fairview Drive

**Hanson** 9:00 a.m. - 12:00 p.m. and  
1:00 p.m. - 4:00 p.m.  
2620 Brown Badgett Loop

**Hawesville** 9:00 a.m. - 12:00 p.m.  
and 1:00 p.m. - 4:00 p.m.  
315 Hawes Blvd.

**Marion** 9:00 a.m. - 12:00 p.m. and  
1:00 p.m. - 4:00 p.m.  
3000 Mott City Road

**Questions regarding your account?**  
Call us any time at 800.844.4832

Please have your account number ready  
when calling or visiting one of the  
cooperative offices.

## Board of Directors

Craig Roberts (District 1)  
Robert White (District 2)  
Chris Mitchell (District 3)  
Susie Givens (District 4)  
William Denton (District 5)  
Larry Elder (District 6)  
John Warren (District 7)  
William Reid (District 8)  
Brent Wigginton (District 9)  
Jonathan Ayer (District 10)  
Richard Basham (Industrial Director)

**Download our SmartHub app!**

**Follow us on social media:**



## WASHINGTON YOUTH TOUR

Each year, Kenergy selects three high school juniors to attend the Washington Youth Tour. A team of Kenergy-area judges selected students based on their academic resume and a 1,000-word essay on the subject of their choice. Kenergy is thrilled to announce the three delegates for the 2020 Washington Youth Tour.



**Emilee Clark**

Daviess County High School  
Emilee is the daughter of Jennifer and Alan Clark.



**Philip Caldbeck**

Daviess County High School  
Philip is the son of Claire Caldbeck.



**Lily Martin**

Webster County High School  
Lily is the daughter of Beverly and Charles Martin.

The delegates will travel to Washington, D.C. for an all-expense paid trip in June. The week-long trip will allow students to learn about leadership, the cooperative model, and also explore the nation's capital. Our delegates will tour Gettysburg, the Smithsonian Institute, Arlington National Cemetery, the FBI Building, the National Zoo, Library of Congress, U.S. Capitol, and the White House to visit with Kentucky's congressional delegation to learn more about energy issues.

More than 1,500 students from across America take part in the Youth Tour experience each year. The National Rural Electric Cooperative Association (NRECA) has been coordinating this program since the 1950's.

***Congratulations to this year's winners!***

## ALAMON POLE INSPECTIONS

Alamon, a pole inspection contractor for Kenergy, will begin inspecting poles in the spring. Each wooden pole Kenergy owns, or is attached to, will be inspected to ensure there are no hazards. Inspectors check for decay, insects, cracks, holes, age, and any damage members may have caused.

You may see trucks in your area bearing a 'Kenergy Contractor' magnet. Inspectors will also have an Alamon picture ID with them. Inspectors will be working during daylight hours only. Don't be alarmed if you see the contractors parked for a few hours and/or riding from pole-to-pole on an all-terrain vehicle.

Inspection areas include Whitesville, South Hanson, Providence, and Wolf Hills. These inspections will be ongoing until the end of July.

If you suspect something irregular or suspicious, please give us a call at **800.844.4832!**

Electric cooperatives use a lot of math and science each day to keep your power on. So, we have to celebrate Pi Day! Pi is the ratio of the circumference of a circle to its diameter.



Pi Day is observed each year on March 14th to coincide with the first three digits of the infinite ratio, 3.14. We encourage you to celebrate with this **Double Crust Chicken Pot Pie** for dinner!

### Ingredients

- 1/2 cup** butter
- 2 medium** leeks, sliced
- 1/2 cup** all-purpose flour
- 1 (14.5 oz)** can chicken broth
- 3 cups** cooked chicken, chopped
- 1 1/2 cups** frozen cubed hash browns
- 1 cup** matchstick carrots
- 1/3 cup** fresh flat-leaf parsley, chopped
- 1/2 teaspoon** salt
- 1/2 teaspoon** pepper
- 1 package** frozen puff pastry sheets, thawed
- 1 large** egg

### Directions

1. Preheat oven to 375°. Melt butter in a large skillet over medium heat; add leeks and sauté 3 minutes. Sprinkle with flour; cook, stirring constantly for 3 minutes. Whisk in chicken broth; bring to a boil, whisking constantly. Remove from heat; stir in chicken, hash browns, carrots, parsley, salt and pepper.
2. Roll each pastry sheet into a 12- x 10-inch rectangle on a lightly floured surface. Fit one sheet into a 9-inch deep-dish pie plate; spoon chicken mixture into pastry. Place remaining pastry sheet over filling in opposite direction of bottom sheet; fold edges under, and press with tines of a fork, sealing to bottom crust. Whisk together egg and 1 Tbsp. water and brush over top of pie.
3. Bake at 375° on lower oven rack 55 to 60 minutes or until browned. Let cool for 15 minutes.

Picture courtesy of Jennifer Davick.

# ELECTRICAL SAFETY

## BABY-PROOFING DONE RIGHT

Electrical safety should be at the top of the list when preparing a safe space in which babies and children can thrive.

Tamper-resistant receptacles cost as little as 50 cents more than a standard outlet and can save a child's life.

- These outlets are now required in all new homes and homes renovated after 2008. The shutter system allows only plugs to be inserted because both springs must be compressed at the same time.
- If outlets are occupied, an easy way to prevent children from pulling on these cords is by moving furniture in front of the covers.
- If outlets are unoccupied, and you don't have tamper resistant receptacles (TRRs), it's vital to find tight-fitting electrical outlet covers. Test them with your children to be sure they cannot pull them out. Then you can live with peace of mind their chances of electrical shock will be decreased immensely.
- Being electrically safe isn't difficult, but it does take time to keep you and your family safe. For more information about TRRs and how to keep your home properly baby-proofed, reach out to your electric cooperative.



## Remodeling ...

(continued from front page)

9. Add or upgrade ventilation fans in bathrooms. This can improve air quality throughout the home—not just in the bathrooms—by removing moisture from the air.
10. Consider having a home energy rating or an energy audit conducted on your home. A professional will evaluate your home for energy-wasters, suggest ways to fix them and recommend additions that will make your house more comfortable and cheaper to heat and cool.



## Featured Businesses Offering Discounts

### NEW DISCOUNTS

#### Spare Room Self Storage

First Month Free and 10% off Rental Rate each month when you sign up with auto pay  
701 Reid Road, Owensboro

#### Moe's Southwest Grill

FREE 6 oz. Cup Queso with Purchase of any Entrée  
2065 E. Parrish Avenue, Owensboro

### Try these discounts out!

#### The Patio

\$5 off \$30 Purchase  
3120 E St Rt 66, Cannelton, IN

#### The Post

10% off Total Food Purchase  
516 Main Street, Tell City, IN

### Spring will soon be here - plan your landscaping needs today!

#### Curb Scapes

10% off 100 Feet or more  
918 Turtle Creek Drive, Owensboro

#### Fence Pros Inc

5% off Project  
3887 Trigg Turner Road, Corydon, IN

#### S & S Earthscapes LLC

5% off Labor  
5940 Highway 2830, Owensboro

#### WeedMan Lawn Care

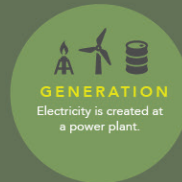
5% off Full Program (7 applications)  
270.926.4101, Owensboro

If you are a business wanting to participate in the Co-op Connections program, please contact Jeanette Weedman at 270.689.6157 or [jweedman@kenenergycorp.com](mailto:jweedman@kenenergycorp.com)



## UNDERSTANDING THE GRID

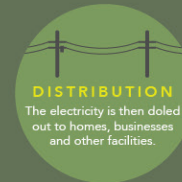
**How does electricity get from a power plant to your home?** The basic functions of your home or business are powered by energy sources that may be hundreds of miles away. Here's how that energy gets from the source to the electrical outlets in your home or office.



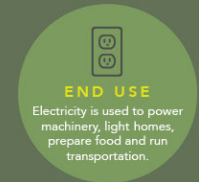
**GENERATION**  
Electricity is created at a power plant.



**TRANSMISSION**  
It is then converted to a very high voltage to be transmitted to your neighborhood.



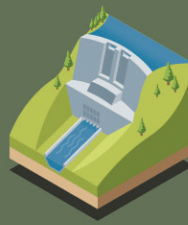
**DISTRIBUTION**  
The electricity is then doled out to homes, businesses and other facilities.



**END USE**  
Electricity is used to power machinery, light homes, prepare food and run transportation.

### GENERATION

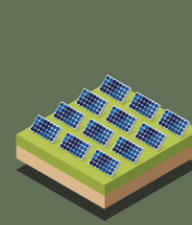
**Electricity starts at a generator**, which can be powered by burning fossil fuels, collecting wind, solar or water energy, or from nuclear reactions.



Hydroelectric dams



Power plants



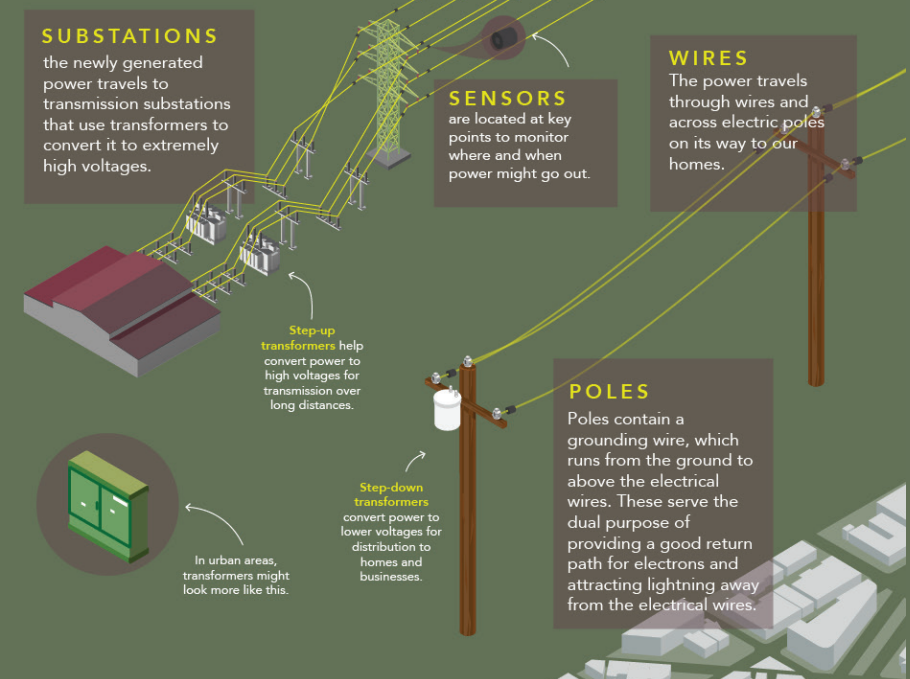
Solar panels



Wind turbines

### TRANSMISSION & DISTRIBUTION

**After it's generated, the power needs to travel** from the power plant to homes, businesses and other facilities. This process is called transmission.



KENERGYCORP.COM | 1.800.844.4832

KENERGY IS AN EQUAL OPPORTUNITY PROVIDER AND EMPLOYER